

Capital Strategy

2025 – 2030

HEREFORDSHIRE CAPITAL STRATEGY 2025-2030

CONTENTS

	Page
1. Executive Summary	2
2. Introduction and Background	4
3. Current Capital Programme & Long Term Plan	6
4. Capital Funding Streams	9
5. Risk Management	11
6. Knowledge and Skills	11
7. Capital Scheme Selection	12
8. Capital Monitoring	14
Appendix A – Proposed Capital Programme	15
Appendix B – Detailed list of Council strategies	19

HEREFORDSHIRE CAPITAL STRATEGY 2025-2030

1. EXECUTIVE SUMMARY

- 1.1 An effective Capital Strategy is vital to ensure that the capital and revenue expenditure on the asset portfolio is directed efficiently and effectively to support service delivery in line with Herefordshire's priorities. This strategy considers the capital investment needs across Herefordshire including acquisition, replacement and rental of land, buildings, and vehicles etc.
- 1.2 Herefordshire Council has seen a number of schemes like the City Link Road and development of Employment Land which enable long term plans for future development. This Capital Strategy is aligned to the [County Plan 2024-28](#) , to capital planning and utilisation of resources.
- 1.3 The Capital Strategy will be reviewed annually, identifying and matching resources to deliver service priorities over a four year period. Where possible a longer term view will be incorporated to ensure we have the vision on all future development opportunities. Also to enable long term planning on capital financing through the Treasury Management Strategy to ensure the best utilisation of resources and returns on investment.
- 1.4 A key partner moving forward is NMiTE (New Model in Technology and Engineering), the new Herefordshire University and the council is keen to support their development in the coming years.
- 1.5 The challenges given to retaining property assets will be based on value for money and delivery of the council's strategic priorities and key service delivery. Surplus properties will either be recycled or disposed of in accordance with the strategic asset management plan and proceeds will be reinvested or retained within the capital receipts reserve until a decision on how to utilise the reserve is made.
- 1.6 The strategic asset management plan sets out a framework for determining the capital property assets needed to enable future service delivery priorities to be realised. Whereas a series of key projects have already been delivered, the capital investment budget will further inform priorities and options for investment/re-investment in assets over the medium term.
- 1.7 The Capital Strategy encourages all areas of the council to put forward requests for capital funding to ensure assets are adequately invested in and development opportunities are considered. However, there are limited resources, and these schemes may need to be profiled over a number of years where they are to be funded corporately. Invest to save schemes are encouraged to help the future pressures we are facing on revenue.
- 1.8 A Programme Management Office was created in 2020 to embed new processes for managing and developing projects. They manage the delivery of all capital projects through the development stage such as Waste and Market Town Investment Plan projects. This is so that when new projects are added to the capital programme they are robust and will be able to commence delivery.
- 1.9 The priority will be to ensure that any new capital scheme will seek external funding sources such as grants in the first instance. Borrowing has always been allowed within the current agreed limits of £6.7m per annum plus any previously approved Public Works Loan Board (PWLb) provision that has not been used. The £6.7m per annum limit is corporately funded borrowing, borrowing funded from revenue savings will be made available over and above this limit. This is the current limit included within the MTFS, this year additional borrowing is being taken to fund the proposals, both the MTFS and Treasury Management Strategy have included the additional borrowing to allow these additional costs to be included in the revenue. The council will always seek external capital funding grants or donations where possible to lower the cost of borrowing but it is essential that resources are used effectively.
- 1.10 The process of allocating finite resources runs alongside delivery of the Medium Term Financial Strategy, through which capital funding, borrowing costs and innovative ways of utilising capital will be captured. The recommendation of capital projects lies with the Executive using a range of criteria to evaluate schemes, with referral to Council for approval. However, the Council may add

HEREFORDSHIRE CAPITAL STRATEGY 2025-2030

new schemes to the capital programme and new schemes can be added once approved at any full council meeting.

- 1.11 The Capital Strategy aims to encourage innovation and remind officers of their ability to draw down funding to fund creative projects that demonstrate delivery of “spend to save / mitigate”. The governance arrangements in place must ensure robust monitoring to ensure projects deliver in terms of quality, cost and benefits. Following central government austerity measures the council is keen to promote capital investment to secure future local funding streams, council tax and business rates.

HEREFORDSHIRE CAPITAL STRATEGY 2025-2030

2. INTRODUCTION AND BACKGROUND

- 2.1 This Capital Strategy sets out Herefordshire's approach to capital investment and disposal over both the short and long term, to deliver the core service priorities. The availability of resources to facilitate these priorities is also considered, reconciling the provision of statutory functions, service aspiration and policy context with limited resource availability.
- 2.2 The strategy incorporates the vision of the council, the overarching policy framework and explains the processes inherent in setting budgets and monitoring the programme. In the ever-changing public sector climate, this document will be reviewed annually, but in essence is written to capture the longer term vision of service priorities.
- 2.3 Through this strategy, the Council makes a clear distinction between capital investments, where the strategic aims will be considered alongside affordability; and treasury management investments which are made for the purpose of cash flow management.
- 2.4 Capital investments, as opposed to pure cash flow management decisions, will be made in line with the Capital Strategy priorities set out in this document. These decisions are clearly within the economic powers of the Council and there are strong governance arrangements in place that underpin the decision making.
- 2.5 The Capital Strategy links into the Council Plan 2024-2028 and other main council strategic documents: Strategic Asset Management Plan, Local Transport Plan, Digital Strategy and Local Development Framework, details are provided in appendix B. It demonstrates how the council prioritises, sets targets and measures the performance of its limited capital resources to ensure that it maximises the value of investment to support the achievement of its key cross-cutting activities and initiatives.

- **What it intends to do**

- Assist in ensuring spending decisions meet key priorities
- Influence and encourage working with partners
- Encourage improvement and innovation
- Ensure revenue consequences and whole life costs are fully considered including return on investment
- Explains the fluctuating nature of capital funding
- Confirms surplus assets will be recycled or disposed of
- Implementation of three year planning and horizon scanning for longer term priorities.

- **What it sets out**

- Capital priorities and plans
- Links to key strategic documents
- How schemes are identified that meet priorities
- How schemes competing for limited resources are selected
- A summary of the capital programme
- Monitoring processes in place

- 2.6 The strategic objectives for our corporate assets are to:

HEREFORDSHIRE CAPITAL STRATEGY 2025-2030

- Since 2021/22, Herefordshire Council has largely be funded from local taxation – Council Tax and Business Rates. Through capital investment, the Council will seek to stimulate the Herefordshire economy to advance business, commerce, jobs and economic prosperity across the county – and provide for a sustainable financial future.
- Optimise the contribution property makes to the council's strategic and service objectives. To this end, assets should only be held that meet the objectives of the council, with clear evidence to demonstrate that they contribute to the key objectives.
- Prioritise investment in our operational assets to meet service delivery needs and to enhance the customer experience. Assets that no longer deliver service priorities will be reviewed and either recycled to facilitate wider community agendas or disposed of.
- Seek innovative, value for money solutions, through use of procurement and return on investment to deliver capital projects that satisfy service need.
- Ensure maximum return from our investment property and land holdings
- Use our assets to fund new developments, re-development and urban regeneration
- Ensure that existing and new property assets are managed in an efficient, sustainable and cost effective way in terms of their use of environmental impact and other resources, their property management and other running costs

HEREFORDSHIRE CAPITAL STRATEGY 2025-2030

3. CURRENT CAPITAL PROGRAMME & LONG TERM PLAN

3.1 The following table details the capital investment by programme board over the four years, full programme details can be seen in appendix A. The consequences of investment are reflected in both the Medium Term Financial Strategy and Treasury Management Strategy.

Proposed Capital Programme

	2024/25 £000s	2025/26 £000s	2026/27 £000s	2027/28 £000s	2028/29 £000s	Total Capital Programme Budgets £000s
Infrastructure Delivery Board	50,533	69,352	51,367	25,910	218	197,380
Commissioning Delivery Board	9,069	11,393	0	0	0	20,462
IT & Transformation Delivery Board	2,094	1,859	548	0	0	4,501
Growth Delivery Board	24,405	56,036	22,418	10,436	0	113,295
Community Wellbeing Transformation Board	10,559	16,607	13,174	2,253	0	42,593
Total Capital Programme	96,660	155,247	87,507	38,599	218	378,231

Financed by

Capital Receipts	38,926
Grants & Funding Contributions	181,329
Prudential Borrowing	157,976
Total Funding	378,231

HEREFORDSHIRE CAPITAL STRATEGY 2025-2030

3.2 Long Term Capital Programme

One Herefordshire

One Herefordshire consists of a number of health organisations and the council represented at a group meeting, they regularly meet to discuss opportunities of where the organisations can work together for the benefit of the County when delivering services.

Herefordshire Council are committed to working with partner organisations such as Health and Higher Education establishments, including Hereford College of Arts and NMiTE. Where possible the council will support economic development opportunities to enable the services to grow and deliver the best service.

The council will be considering the use of external funding models including income strip models to enable delivery of student accommodation along with other developments where external organisations are used to deliver the projects.

Employment Land

The employment land at Ross will be developed in the current capital programme and other sites in other market towns will hopefully also come forward for development.

Hereford City Centre Transport Package

A Levelling Up grant of £6.33m was awarded for the delivery of the transport hub, this project will hopefully complete by 2026 and enable better transport links from the railway station.

Infrastructure- future plans.

Herefordshire Council are potentially investing in a number of road schemes over the next few years, these schemes are currently being developed and will be included into the capital programme once approved. The initial budget of £10.3m has been increased to £40.3m for the Hereford Western Bypass Phase 1. The delivery of the road infrastructure will support the growth of the economy and the package of active travel improvements will help residents to live safe, healthy and independent lives. External grants to deliver these schemes will be applied for.

Highways Maintenance

Like many councils the highways network has deteriorated over time with central government grants not able to cover all the capital investment required to prevent further deterioration of the highway network. Revenue budgets are fully utilised each year to keep up with repair work to ensure that the network is in a safe condition before longer term capital investment is available. The road network has a backlog of maintenance, the values are estimated from national guidance, as a high-level analysis the figures reflect and are representative of the view of deterioration across the highways asset. This would be to bring all assets back to a new condition.

Asset Type	Current Estimated Backlog
Carriageways	c£119.2m
Footways and Cycle ways	c£1.7m
Structures	c£80.5m
Street Lighting	c£1.7m
Traffic Signals	c£2.4m
Road Markings	c£1.2m

HEREFORDSHIRE CAPITAL STRATEGY 2025-2030

Traffic Signs	c2.9m
Vehicle Restraint Systems	c1.3m
Trees and Verges	c1.0m

The council has invested significant amount of council funding to help improve the road network. The council continues to lobby central government for additional support for highways maintenance and it is not sustainable to pass all this onto local residents. We are awaiting the final confirmations of the full grant award for 2025/26 onwards, with uplift funds announced over the next 10 years.

Other areas for Development

There are a number of projects that will be developed in the next financial year for waste management changes, delivery of the Hereford Town Investment Plans projects such as a new Museum and development of the Library & Learning Centre, which were part of a £25m funding bid. The third council project was for greening the city and business cases for all were approved by the Towns Board. The council is the accountable body for the £22.4m funding but the other approved projects will be run by other organisations.

There will be a replacement school at Peterchurch and significant works for a new unit and work within the existing site at Brookfield to increase capacity.

Other projects being delivered include the improvement works at the Shire Hall and other property works across the estate including schools.

The Council will be looking to work with current housing companies to increase the availability of affordable housing for local residents.

HEREFORDSHIRE CAPITAL STRATEGY 2025-2030

4. CAPITAL FUNDING STREAMS

4.1 This section explains the source of resources available to fund the capital programme. Currently the majority of funding is allocated from central government, in part to fund specific schemes that deliver their national priorities.

4.2 The following funding sources are available;

Borrowing

- Prudential borrowing (PB) has been allowed since 2004 when government relaxed the rules to allow councils to finance their own capital, providing they could demonstrate affordability to repay the debt and interest. In a time of reduced resources PB may also be used to fund initiatives to deliver future revenue savings that can then fund the annual debt and interest cost. The Council has a number of invest to save schemes currently and there is no limit to the amount of additions to the capital programme in any year where all borrowing costs can be funded from revenue savings, as long as they can show they provide value for money, score highly enough in the review and are approved by Council.

Grants

- Government currently provide many direct grants to fund initiatives that the Council should deliver as part as their statutory duty. The major capital grants are:
 - **Transport Grants** – used to support the Hereford Integrated Transport Strategy capital programme, covering rural transport schemes, and road safety initiatives and highways maintenance. The Department for Transport has a process to allow local authorities to bid for revenue and capital funds to fund sustainable transport schemes.
 - **Basic Needs Funding** - the Government each year provide a grant based on future needs for the Council to provide enough school places.
 - **Schools Capital Maintenance Grant** – is an amount allocated each year to help maintain schools in a good state of repair.
 - **Devolved Formula Capital** – is an amount allocated each year to primary and secondary schools to be spent on priorities in respect of buildings, ICT and other capital needs. It may be combined with capital funding from other sources or saved to fund a larger project.
 - **Disabled Facilities Grant** - contributes towards the cost of providing adaptations and facilities to enable disabled people to continue living in their own homes. The central government grant funding towards this has been protected from cuts by the coalition government in the Corporate Spending Review (CSR), in fact this grant has increased annually.
- External funding bodies distribute funding for projects that satisfy their key criteria and objectives and the Council secure these via a bidding process.

Developer Contributions S106

- Developer contributions continue to support the capital investment need associated with developments throughout the Country.
- In future once a S106 has been completed, planning permission has been granted and the development the subject of the agreement has commenced, with the right governance in place the Council will be able to internally borrow to fund the project to commence prior to the developer contributions being received. The project to be funded must be within the terms of the S106 agreement. The borrowing will be funded short term within the cash

HEREFORDSHIRE CAPITAL STRATEGY 2025-2030

balances and repaid once the developer contributions have been received. Do note however there may be a risks to the Council namely; if the development does not reach the trigger point for payment, the Council would then have to find alternative funding. The trigger points for the contributions to be paid are tailored to each development on a case by case basis and are not standard. The developer can advance at any stage of the development that a scheme is not viable. This would be independently reviewed by the District Valuer (at a cost to the developer) but it may conclude that the financial contributions are not viable. The scheme may proceed as a wholly 100% affordable scheme whereby financial contributions towards infrastructure are not required.

Capital Receipts

- The Council maintains a register of surplus property assets. A major review of property assets is now underway that will produce a Delivery and Rationalisation programme; implemented over the coming years.
- The public sector landscape of service delivery is now subject to major change. Annual reviews of the Council operational property portfolio will identify potential opportunities for remodelling and co-location, through alternative methods of service delivery.
- The Council must prioritise disposal for capital receipts against competing demands for affordable housing land to build social housing and Community Asset Transfers.
- The disposal of surplus assets is critical to deliver the Councils Capital Strategy. Specifically the delivery of the property maintenance and office accommodation review requires receipts to fund PB costs. Capital receipts are deemed a central receipt and so held corporately to use to deliver wider strategic priorities. Until receipts retained in the capital receipt reserve are allocated they reduce the overall borrowing costs of the Council.
- At the end of 2023/24 financial year there was a balance of £38.2m in the capital receipts reserve. There are a number of schemes within the capital programme to be funded by capital receipts, the balance will be retained to deliver enhanced investment on the use of these reserves, once business cases have been submitted for approval at Council.

Revenue

- Both revenue budget and reserves can be used to fund the capital programme, either via a one off contribution to fund a project in its entirety or an annual sum to repay PB debt costs. Ongoing use of revenue should be assessed in relation to the impact on council tax via the use of assessing its prudential indicators. Funding is available throughout the year to fund both revenue and capital innovative projects that will deliver future year on year savings.
- 4.3 The table in 3.1 shows the expected resources available to fund the capital programme over the four years.
- 4.4 The programme is heavily reliant on grants and contributions to fund capital expenditure and these are usually issued with tight timeframes and restrictions attached. The grants may also demand regular monitoring returns to demonstrate the funding has been used in accordance with the plan.

5. Risk Management

- 5.1 Risk is the threat that an event or action will adversely affect the Council's ability to achieve its objectives and to execute its strategies successfully and/or limit its ability to exploit opportunities.
- 5.2 Risk management is the process of identifying risks, evaluating their potential consequence and determining the most effective methods of mitigating them. It is both a means of minimising the cost and disruption to the organisation and of ensuring staff understand and appreciate the element of risk in all their activities.
- 5.3 Through effective risk management the Council aims to minimise its exposure to unwanted risk – those risks that are not actively sought and which carry no commensurate reward to the Council. This may involve transferring risk to a third party.
- 5.4 It is important to note that risk will always exist in some measure and cannot be removed in its entirety. Additionally, in order to realise investment and commercial gains, a measure of risk must be taken – and therefore risk should be considered both in terms of threat to the Council as well as positive opportunities.
- 5.5 To manage risk effectively, the risks associated with each capital project need to be systematically identified, analysed, influenced and monitored – and especially when investing in capital assets held primarily for financial returns. Under the CIPFA Prudential Code these are defined as investments and so the key principle of control of risk and optimising returns consistent with the level of risk applies.
- 5.6 An assessment of risk should be built into every capital project and major risks recorded in the Risk Register. This may include political, economic, legal and regulatory, technological, environmental, reputation as well as financial risk. By managing risk effectively, the Council is better able to make careful, well thought through decisions in full knowledge of the adverse risks that apply and mitigating measures.

6. Knowledge and Skills

- 6.1 All capital investment approvals are subject to robust consideration and challenge by members and officers from across the Council with extensive experience from varying professional backgrounds.
- 6.2 All officers attend courses on an ongoing basis to keep abreast of new developments and skills to ensure their Continuous Professional Development. Members are also offered training annually to ensure they have up to date skills and are able to make capital and treasury decisions. It is important that we continue to strengthen training of officers and members on the understanding of environmental issues and the impact of these when undertaking capital works as we continue the approach to net zero carbon when producing business cases and taking decisions.
- 6.3 The Council's property portfolio is managed by its Property Services Team. The team has extensive knowledge of the Herefordshire property market and experience dealing with a mix of property types and professional work including professional services, landlord and tenant, statutory valuations, acquisitions and disposals, commercial and residential property management.
- 6.4 The Council's asset valuations for its financial statements are assessed on an agreed five year programme covering the whole property portfolio. The Council also has internal resources to advise on construction, repair and maintenance, and statutory compliance matters across its property portfolio.

HEREFORDSHIRE CAPITAL STRATEGY 2025-2030

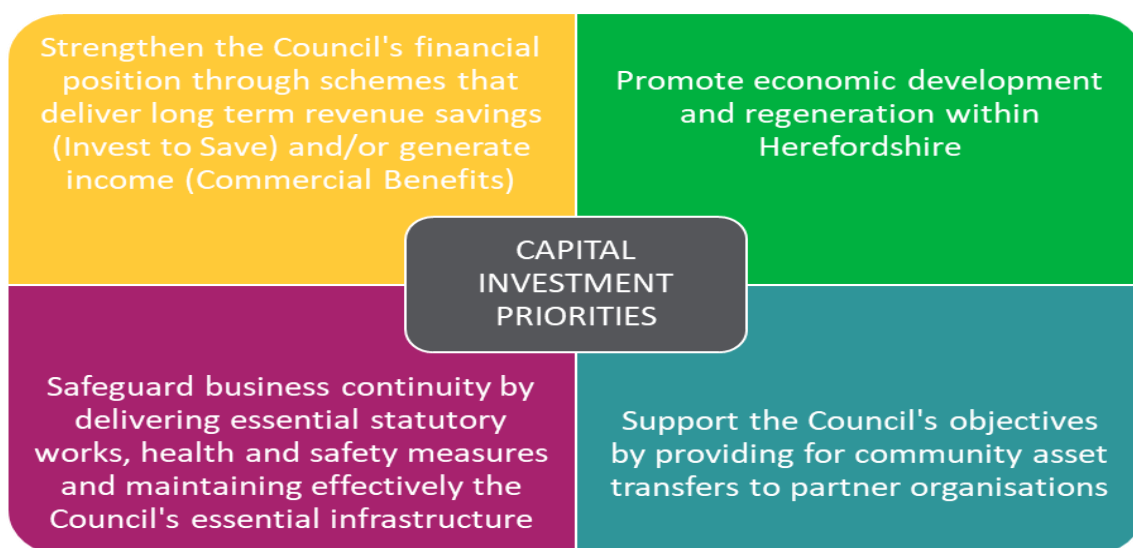
6.5 Where required, and with due diligence, the Council may also appoint external agents to advise on particular specialist matters or to access specialist expertise that may not be available 'in house.'

7. CAPITAL SCHEME SELECTION

- 7.1 The capital programme is delivering a number of projects to enable the council to deliver the objectives within the county plan 2024-28. Therefore projects that are added to the capital programme are for this purpose and not added as an investment purely to generate income. There are currently no expectations in the MTFS for capital investment to generate a revenue surplus to balance the budget. Although in the long term there are advantages in easing the removal of Revenue Support Grant (RSG) in generating a net revenue position it is not the priority when reviewing projects to add to the capital programme.
- 7.2 All capital schemes go through a stage process that is detailed in the project management process document.
- 7.3 Schemes are continually reviewed against evolving priorities and may be subject to change, redesign or cancellation, to ensure they continue to deliver the requirements of the council and provide value for money.
- 7.4 Capital funding will be initially allocated to council priorities and approved by council. The capital guidance policy details the process for the capital funding requests to ensure provision in the capital programme at any time as long as they are approved at a Council meeting or otherwise as delegated by full Council. This is necessary so that services are able to request capital funding at the appropriate time, when sufficient information is available to make an informed decision and opportunities are not lost due to waiting.

Rationale for Investment

7.5 Capital investment is integral to revenue budget forecasting. Capital investment must be directed to obtain maximum benefit from available resources looking at efficiencies, effectiveness, and economically. Revenue implications must be considered for all capital schemes, this could represent the cost of borrowing, future running costs and projected benefits. Schemes included for capital investment must demonstrate at least one of the following prioritisation criteria;



- 7.6 Funding above the corporate limit of £6.7m is available to support capital investment that gives a clear pay back through revenue budget savings.
- 7.7 Effectiveness and Best Value is demonstrated within the decision reports for each project and reviewed at the conclusion of a project. Value for Money on the build of a project is secured and

HEREFORDSHIRE CAPITAL STRATEGY 2025-2030

demonstrated through utilisation of the Procurement Policies and Framework for managing capital projects. Cabinet are keen to ensure where possible we should use Council funding to procure services from local suppliers to help improve the local economy, therefore social values should also be considered when making a best value decision.

- 7.8 The council has discretion to make loans for a number of reasons, including economic development. These loans will be treated as capital expenditure. In making loans the council is exposing itself to the risk that the borrower defaults in repayments. The council, in making these loans, must therefore ensure they are prudent and has fully considered the risk implications, with regard to both the individual loan and that the cumulative exposure of the council is proportionate and prudent. The council will ensure that a full due diligence exercise is undertaken and adequate security is in place. The business case will balance the benefits and risks. All loans will be subject to close, regular monitoring.

- 7.9 Property services regularly review use of property assets as part of operational duties to ensure they are still required to deliver council priorities, alternatively assets may be recycled or deemed surplus to requirement. Sale of assets will deliver revenue savings and generate corporate capital receipts for investment in future capital schemes. Future building requirements will need to assess the concept of sale and leaseback and multi-use, shared approach for occupation.

HEREFORDSHIRE CAPITAL STRATEGY 2025-2030

8. CAPITAL MONITORING

- 8.1 Capital investment requirements are significant, however, capital finances are limited at £6.7m, due to the repayment of interest in the revenue budget for corporately funded projects and central government current funding levels are expected to reduce. Herefordshire Council must have a prudent approach to capital allocation and monitoring to ensure scarce resources are used to maximum effect.
- 8.2 Due to the significant changes that occur during capital programme implementation and forecasting it is considered prudent to maintain:
- a reserve list of deferred capital schemes that can be accelerated or delayed as required
 - a contingency sum that should be included in all projects, due to the impact an increase in inflationary capital costs can have over the length of the project.
- 8.3 As part of a project's business case, an option appraisal is carried out and a whole-life costing review is undertaken before a capital scheme is included in the capital programme, this is then developed to detailed costings so an informed decision to spend can be made. Each project must also state how the proposal seeks to deliver the council's environmental policy commitments to net zero carbon and aligns to the success measure in the County Plan. If there could be a detrimental impact on the environment explain how you have sought to minimise and offset this.
- 8.4 Once a capital scheme is included in the capital programme it is monitored following appropriate project management methodology, managed by experience project managers within the project management office team and using experienced officers in each service area, through a number of project boards. Through the proposed project management office changes, the Executive Programme Board will review quarterly, progress of the projects being reported through the Programme Delivery Boards. The PMO will prepare a dashboard for each Board who will satisfy themselves that the projects are being managed in line with the agreed process and that projects remain relevant and aligned to the Delivery Plan.
- 8.5 In addition to significant individual projects, the capital programme also includes the council's annual Highways and Transportation capital programme of investment. This is guided by the Local Transport Plan to invest in the improvement and maintenance of the local transport infrastructure. Targets relating to highway maintenance standards, road safety and sustainable transport ensure that expenditure is in line with corporate plan objectives and outcomes expected by central government. This programme is currently managed through the Highways Maintenance Delivery Board and through the commissioning arrangements with Balfour Beatty.
- 8.6 However the governance process embedded follows the following processes. The PMO Capital Programme Manager will allocate the project to a Programme Delivery Board. The project manager is expected to maintain all documentation and report regularly using highlight reports to the SRO, Project Board and Programme Delivery Board as required. Details regarding the Board governance structure, reporting and escalation process will be outlined on the Project Management intranet site. In summary, individual Project Boards report into Programme Delivery Boards who are in turn monitored by Executive Programme Board. The Executive Programme Board represents the highest level of officer involvement and accountability; allocating feasibility funding and having oversight of all projects.

HEREFORDSHIRE CAPITAL STRATEGY 2025-2030

Appendix A

Capital Programme position April 2025/26

Scheme Name	Spend in	2024/25	2025/26	2026/27	2027/28	2028/29	Total
	Prior Years £000	Total Budget £000	Total Budget £000	Total Budget £000	Total Budget £000	Total Budget £000	Scheme Budget £000
Local Transport Plan (LTP)		15,466	15,466	15,466	15,466	0	61,864
Extra Ordinary Highways Maintenance & Biodiversity Net Gain	1,934	365	0	0	0	0	2,299
Public Realm Maintenance - Mitigating Risk on the Network	3,925	1,025	0	0	0	0	4,950
Additional Pothole Allocation 23/24 & 24/25		3,660	0	0	0	0	3,660
Winter Resilience	183	1,219	0	0	0	0	1,402
Resurfacing Herefordshire Highways		5,000	10,000	0	0	0	15,000
City and Market Town Public Realm Investment		0	1,200	0	0	0	1,200
Natural Flood Management	274	276	373	350	0	0	1,274
Highways Infrastructure Investment		8,170	6,485	6,385	0	0	21,040
Public Realm Improvements for Ash Die Back	19	544	494	240	118	0	1,416
Traffic Signal Obsolescence Grant and Green Light Fund		270	271	0	0	0	541
Hereford City Centre Transport Package	38,304	800	7,875	0	0	0	46,979
Hereford City Centre Improvements (HCCI)	5,097	903	0	0	0	0	6,000
Hereford ATMs and Super Cycle Highway		289	711	0	0	0	1,000
Emergency Active travel Fund	88	31	0	0	0	0	119
Active Travel Fund 4	58	248	0	0	0	0	306
Hereford Western Bypass Phase 1		1,380	8,620	20,300	10,000	0	40,300
Stronger Towns Fund - Greening the City	105	298	0	0	0	0	404
LUF - Active Travel Measures (north of river)	555	858	3,053	0	0	0	4,466
LUF - Active Travel Measures (south of river)	244	3,923	5,029	0	0	0	9,197
Integrated Wetlands	2,479	497	1,686	99	0	0	4,760

HEREFORDSHIRE CAPITAL STRATEGY 2025-2030

Local Electric Vehicle Infrastructure Capital Fund (LEVI)	0	424	400	300	0	1,124	
LEVI Pilot Fund Grant	24	96	0	0	0	120	
Wye Valley National Landscape (previously AONB)	173	276	0	0	0	449	
Safer Streets 5	165	0	0	0	0	165	
Fastershire Broadband	30,958	2,672	0	0	0	33,630	
E & E's S106	2,030	3,904	3,356	26	0	9,315	
Play Area Investment	0	500	500	0	0	1,000	
Public Realm Services Fleet	0	0	1,322	0	218	1,540	
Public Realm Mobilisation	0	0	450	0	0	450	
Yazor Brook	0	260	0	0	0	260	
Road Safety Schemes	0	1,500	1,500	0	0	3,000	
Council school transport fleet	0	350	0	0	0	350	
Herefordshire Flood Risk Mitigation	0	1,055	1,000	0	0	2,055	
Moving Traffic Enforcement Phase 2	144	0	0	0	0	144	
Infrastructure Delivery Board	84,398	50,533	69,352	51,367	25,910	218	281,777
UK Shared Prosperity Fund	187	948	0	0	0	1,135	
Waste		6,697	11,393	0	0	18,090	
Rural Prosperity Fund	281	1,424	0	0	0	1,706	
Commissioning Delivery Board	469	9,069	11,393	0	0	0	20,931
Key Network Infrastructure (Core Data Centre Switches & Corporate Wi-Fi)	527	28	0	0	0	555	
HARC SAN Lifecycle Replacement	1	211	0	0	0	212	
Data Centre Equipment Lifecycle Replacement	192	37	0	0	0	229	
Windows Server Upgrades	175	119	36	0	0	330	
Device and Ancillary kit replacement programme		187	415	548	0	1,150	
M365 E5 Implementation	300	227	43	0	0	570	
Planning & Regulatory Services software		670	726	0	0	1,396	
Contact Centre Telephony Replacement		82	0	0	0	82	
Wide Area Network (WAN) Replacement		286	0	0	0	286	
School Route Planning Software		0	50	0	0	50	

HEREFORDSHIRE CAPITAL STRATEGY 2025-2030

IT System Upgrades & Server Replacements 2025-26	0	500	0	0	0	500	
CCTV Equipment Upgrades	0	89	0	0	0	89	
VMWare Host Replacement	248	0	0	0	0	248	
IT & Transformation Delivery Board	1,196	2,094	1,859	548	0	0	5,697
Schools Capital Maintenance Grant	3,300	2,795	1,200	1,200	0	8,495	
Peterchurch Area School Investment	288	671	6,595	3,299	0	10,853	
Brookfield School Improvements	422	2,830	2,570	0	0	5,822	
High Needs Grant	85	500	2,000	4,318	0	6,903	
Basic Needs Funding	215	1,000	8,000	7,068	0	16,284	
Childcare Expansion Capital Grant 2023-24	0	296	0	0	0	296	
Preliminary works to inform key investment need throughout the county	306	210	0	0	0	516	
School Accessibility Works	141	524	1,143	693	0	2,503	
C & F's S106	2,440	2,369	345	0	0	5,153	
Work to Shirehall Annex (Care Leavers Base)	100	0	0	0	0	100	
Shirehall Improvement Works	0	2,935	1,065	0	0	4,000	
Children's residential homes for 11 to 18 year olds	0	424	0	0	0	424	
Estates Capital Programme 2019/22	4,313	1,238	331	0	0	5,882	
Residual property works identified in the 2019 condition reports	613	779	0	0	0	1,392	
Estates Building Improvement Programme 22-25	1,453	500	1,053	0	0	3,007	
Estates Building Improvement Programme 2023-25	759	1,000	1,768	0	0	3,527	
Estates Building Improvement Programme 2024-27	901	1,525	340	0	0	2,766	
Building works from 2022 Condition Surveys	10	1,050	1,050	350	0	2,460	
Estates Building Improvement Programme 2025-28		1,327	2,451	526		4,305	
Flexible Futures	740	110	0	0	0	850	
Wye Valley Trust - Education Centre Investment	0	6,000	0	0	0	6,000	
HWGTA - Development of Vocational Work Based Skills Investment	0	2,000	0	0	0	2,000	
Green Homes Grant - Local Authority Delivery	779	40	0	0	0	819	

HEREFORDSHIRE CAPITAL STRATEGY 2025-2030

Home Upgrade Grant		4,646	0	0	0	0	4,646
Solar Photovoltaic Panels	1,063	1	535	535	0	0	2,134
Employment Land & Incubation Space in Market Towns	343	627	11,318	53	8,360	0	20,701
Leominster Heritage Action Zone	1,493	1,911	0	0	0	0	3,404
Gypsy & Traveller Pitch development	808	1,069	0	0	0	0	1,877
Growth Delivery Board	13,824	24,405	56,036	22,417	10,436	0	127,119
Disabled facilities grant		3,484	2,200	2,200	2,200	0	10,084
Empty Property Investment & Development		593	600	0	0	0	1,193
Single Homelessness Accommodation Programme (SHAP)	455	915	0	0	0	0	1,370
Acquisition Fund for Housing Provision		2,500	2,500	0	0	0	5,000
Merton Meadow - Brownfield Land Release Fund		600	1,400	0	0	0	2,000
Swimming Pool Support Fund		83	0	0	0	0	83
Libraries Improvement Fund		42	19	0	0	0	62
Stronger Towns Fund - Hereford Museum & Art Gallery Redevelopment	2,008	1,399	5,690	10,000	53	0	19,150
Stronger Towns Library & Learning Centre relocation to Shirehall	45	274	2,063	624	0	0	3,005
Property Improvements in Care Homes		550	604	0	0	0	1,154
Community Capital Grants Scheme		120	1,530	350	0	0	2,000
Community Wellbeing Transformation Board	2,508	10,559	16,607	13,174	2,253	0	45,101
Total Capital Programme	102,394	96,660	155,247	87,507	38,599	218	480,625

Strategies that Support the Capital Strategy

- **The Strategic Asset Management Plan**

Contains the Corporate Property Programme for the council.

It mainly focuses on proposals to:

- Rationalise the current corporate administrative estate
- Introduce better ways of working to drive efficiency, for example home working
- Support the organisation to meet its carbon reduction targets.

The overarching strategy contains a suite of supplementary procedures in the Corporate Asset Procedure that covers all aspects of purchase, disposal, owning and managing property assets as well as other supplementary procedures on items such as Community Asset Transfers, storage and listed sites.

- **Local Transport Plan**

This plan covers the policies and delivery plans relating to transport and explains how these contribute to the wider local agenda. It considers the transport needs both of people and of freight and includes the strategic countywide programme of transport infrastructure improvements and maintenance. The aim is to ensure the maintenance, operation, management and best use of the county's transport assets.

Annual funding available for local transport has over recent years been in the region of £12 million to support capital maintenance of the highway asset and support road safety and transport network improvements. In future the level of funding for transport capital investment will be constrained, but remain a significant component of the overall capital programme, reflecting the importance of maintaining this important asset and its crucial contribution to the economic vitality of the county.

- **Schools Capital Investment Strategy**

This strategy has been developed in consultation with Schools, Children and Families Service. Its principles support the vision, objectives and targets of the Herefordshire Council. In so doing, it supports and contributes to the council's Capital Strategy. It specifically seeks to ensure that assets that do not support the objectives of the Herefordshire Council are disposed of through sale to realise a capital receipt or through community asset transfer, that investment is clearly linked to specific objectives and targets; and that assets such as schools, children's centres, youth centres and children's multi-agency offices are corporate resources, available to accommodate delivery of wider services to the community from across Herefordshire. The strategy seeks to join up future capital funding streams wherever possible to ensure that best value is achieved from the funding available and to maximise the benefits realised from the investment.

- **Digital Strategy**

The Digital Strategy aims to ensure that Herefordshire Council has a stable, fit-for-purpose and sustainable information, communications and technology platform and service organisation capable of supporting the drive to deliver efficient and effective services to the citizens, directorates, businesses, organisations, members and public sector partners within Herefordshire. It will assist Herefordshire Council to make more flexible use of technology to achieve efficiencies, access services and share workspace and resources with partner agencies.

HEREFORDSHIRE CAPITAL STRATEGY 2025-2030

• **Medium Term Financial Strategy**

This document is approved annually, based on the budget setting requirements of the council and reflects on the strategic and operational intentions over a three-year time frame. It covers the capital programme and funding streams including the affordability of prudential borrowing and use of capital to facilitate revenue budget savings in future years.

• **Treasury Management Strategy**

This strategy sets out the council's overall approach to treasury management operations including the capital programme and links to the borrowing limits, minimum revenue provision in relation to debt repayment and prudential indicators.

Capital vs Treasury Management Investments

- Treasury Management investment activity covers those investments arising from the Council's cash flows and debt management activity. The power to invest is set out in the Local Government Act, Section 12.
- For treasury management investments, the security and liquidity of funds are placed ahead of investment return/yield. Treasury related activity, including the management of associated risk, are managed separately in accordance with the Council's Annual Treasury Management Strategy and are not covered by this Capital Strategy.
- The CIPFA Treasury Management Code recognises that organisations may make investments for policy reasons outside normal treasury management activity. These may include service and commercial investments and are subject to the guiding principles outlined in this capital strategy:
 - service investments; investments held clearly and explicitly in the course of the provision, and for the purposes of operational services including regeneration
 - commercial investments; investments taken mainly for financial reasons e.g. purchase of investment property
- Latest guidance issued by the Secretary of State makes clear that borrowing to finance the acquisition of non-financial investments (e.g. commercial property investment) made *purely* for profit shall be considered 'borrowing in advance of need'.
- The Council's policy on borrowing in advance of need forms part of the Annual Treasury Management Strategy. However, and to be clear, the Council will not borrow for capital investment made solely for yield generating opportunities. Under the Prudential Code if, exceptionally, the Council chooses not to have regard that provision, then an explanation should be brought forward explaining the rationale for its decision.